

# GREENIFF

CARE



WORKWEAR FOR THE  
HEALTHCARE INDUSTRY

FROM 2022

# GREIFF SUITS.

## YOUR WORKWEAR IS OUR MISSION

We do everything we can to ensure that you not only feel good in your workwear, but also that you are well dressed! Because our products are with you every day through your workday, they need to be comfortable, functional and able to withstand a lot. You can be sure that we know that and only use high-quality materials that make our clothing durable and long lasting.

Our employees' expertise and our long-standing relationships with our partners guarantee high-quality and stylish design in all our collections. See for yourself!



## DEAR READERS,

In dynamic times that constantly challenge us all, it is reassuring to rely on experienced partners - and on products of the highest quality, designed by professionals for professionals.

Our success story began in 1802 with the weaving and printing of linen, but we have never stood still. Just as the needs of our customers change, we are constantly evolving and improving our products. Examples for this are the further development of our collections for various job profiles and new advancements on the important issue of sustainability.

Whatever moves you in your job, we have the perfect clothing for it. There is one thing, you can rely on - GREIFF suits!

Jens Möller,  
Managing Director and Owner of GREIFF

# FOR A BETTER FUTURE

## WHAT WE DO AT GREIFF

Sustainability determines everything we do because we accept our responsibilities towards people and the environment. Our workwear is robust, durable, of high quality and with that way ahead of fast fashion. But we don't just lean on this: We are actively working for a safe workplace for all employees in the production process and the conservation of natural resources. A fair trade and highest possible transparency are also close to our hearts. That's why you can go to myGREIFF.de to see where your product was manufactured. Our commitment is also demonstrated by our numerous memberships and certifications with which we advocate for improvements.



On myGREIFF.de you can track the entire production process of your product, from fibre to finish. You'll see where the raw materials come from and where they were processed.



We are a member of the Fair Wear Foundation (FWF). By implementing the working policies of this organisation in our production facilities, we continually improve the labour and social conditions of local people.



We are part of the Textile Alliance, which was initiated in 2014 by the German government. Its purpose is to facilitate exchange between economics and politics. Together with our alliance partners, we set goals for ourselves to improve sustainability throughout the entire production chain.



We are co-founders of the MaxTex Association. Together with our partners, we combine expert knowledge and develop innovative product solutions to promote sustainability in the textile industry.



The Green Button is a state seal for sustainable produced fabrics. It sets binding requirements to protect people and the environment. A total of 46 demanding social and environmental standards must be met.



The Fairtrade product seal for cotton stands for fairly grown and traded raw cotton, which can be traced directly through all production steps, and is processed separately from non-Fairtrade cotton. The cotton in textiles that carry this seal is 100 percent Fairtrade certified.



Based on the STANDARD 100 by OEKO-TEX, more and more of our products carry the traceable MADE IN GREEN seal, which also monitors environmental friendliness and working conditions in the production facilities.



We rely on the STANDARD 100 by OEKO-TEX – a uniform and independent certification system for textile products. It stands for textiles that have been tested for harmful substances and products that do not pose health risks.



We use Tencel in parts of our collection. This innovative cellulose fibre is extracted from wood and processed in a sustainable way.



***Only the best for  
heroes - sustainable  
and smart workwear  
from GREIFF.***

# INDEX

GREIFF CARE  
FROM 2022

02 WHO WE ARE

04 RESPONSIBILITY

10 SCRUBS

18 COATS

22 TROUSERS

32 COLLECTION OVERVIEW

36 ESSENTIALS

40 GREIFF SERVICE & INFO  
Sewing service | Fabric info | Fitting | Measurement chart



1 | white

# OUTFITS FOR PROFESSIONALS

WITH FUNCTIONAL DETAILS AND HIGH COMFORT

Patients rely on you for their health. You should be able to rely on your workwear. That's why we developed GREIFF CARE. Because we know that in your job, every detail counts!



2 | light grey



3 | lime green

4 | lime green

1 | Men polo shirt 66270 on page 39. 2 | Unisex scrub top 5007 on page 17.  
3 | Unisex scrub top 5003 on page 17. 4 | Ladies scrub top 5105 on page 11.



1|  
light grey

# WELL DESIGNED SCRUBS

PROFESSIONAL OUTFITS  
FOR PROFESSIONAL CARE



2|  
matt pink

1|  
light grey



2|  
light grey



with stand-up  
collar



## 1 | Ladies scrub top Regular Fit 5105

V-neck, short sleeve, 3 patched pockets, integrated phone pocket, side vents, longer back, keyloop integrated in left pocket, back length 74 cm/size M.

**Sizes:** XS-4XL

**Fabric:** 50% cotton, 50% polyester, 175 g/m<sup>2</sup>

**Care:**

- white 5105.6550.090
- light grey 5105.6550.015
- mid blue 5105.6550.023
- lime green 5105.6550.042
- matt pink 5105.6550.056



## 2 | Ladies scrub top Regular Fit 5106

Stand-up collar, short sleeve, invisible press buttons, 2 patched pockets, breast pocket with pen holder, side vents, keyloop integrated in left pocket, back length 75 cm/size M.

**Sizes:** XS-4XL

**Fabric:** 50% cotton, 50% polyester, 175 g/m<sup>2</sup>

**Care:**

- white 5106.6550.090
- light grey 5106.6550.015
- mid blue 5106.6550.023
- lime green 5106.6550.042
- matt pink 5106.6550.056



1| bordeaux



2| dark blue



# TENCEL: PROVIDES YOU WITH NATURAL COMFORT

COMFORTABLY SOFT AND BREATHABLE

With these features, the innovative and sustainable fabric made of cellulose fibres is a practical companion for everyday care work.



1| dark blue



2| dark blue



**1 | Ladies scrub top Regular Fit 5110**  
 Stand-up collar, short sleeve, asymmetric press buttons, 2 patched pockets, pearl press buttons, back and front side princess seams, keyloop integrated in left pocket, back length 70 cm/size M.  
**Sizes:** XS-4XL  
**Fabric:** 50% lyocell, 50% polyester, 195 g/m<sup>2</sup>  
**Care:**

- white 5110.6560.090
- dark blue 5110.6560.022
- dark green 5110.6560.040
- bordeaux 5110.6560.053

**2 | Unisex scrub top Regular Fit 5006**  
 Stand-up collar, short sleeve, invisible press buttons, 2 patched pockets, breast pocket with pen holder, side vents, keyloop integrated in left pocket, back length 75 cm/size M.  
**Sizes:** XS-4XL  
**Fabric:** 50% lyocell, 50% polyester, 195 g/m<sup>2</sup>  
**Care:**

- white 5006.6560.090
- dark blue 5006.6560.022
- dark green 5006.6560.040
- bordeaux 5006.6560.053





1 | mid blue

Trousers 5333 on p. 30.

1 | mid blue



2 | mid blue



**1 | Unisex scrub top Regular Fit 5006**  
Stand-up collar, short sleeve, invisible press buttons, 2 patched pockets, breast pocket with pen holder, side vents, keyloop integrated in left pocket, back length 75 cm/size M.  
**Sizes:** XS-4XL  
**Fabric:** 50% cotton, 50% polyester, 175 g/m<sup>2</sup>  
**Care:**   
● white 5006.6550.090  
● light grey 5006.6550.015  
● mid blue 5006.6550.023  
● lime green 5006.6550.042  
● matt pink 5006.6550.056



**2 | Unisex scrub top Regular Fit 5005**  
V-neck, short sleeve, 3 patched pockets, integrated phone pocket, side vents, keyloop integrated in left pocket, back length 75 cm/size M.  
**Sizes:** XS-4XL  
**Fabric:** 50% cotton, 50% polyester, 175 g/m<sup>2</sup>  
**Care:**   
● white 5005.6550.090  
● light grey 5005.6550.015  
● mid blue 5005.6550.023  
● lime green 5005.6550.042  
● matt pink 5005.6550.056



2 | lime green

2 | lime green

Unisex trousers 5338 on p. 30.







1 | light grey

1 | light grey



with envelope collar

1 | matt pink



1 | light grey

**1 | Unisex scrub top Regular Fit 5003**

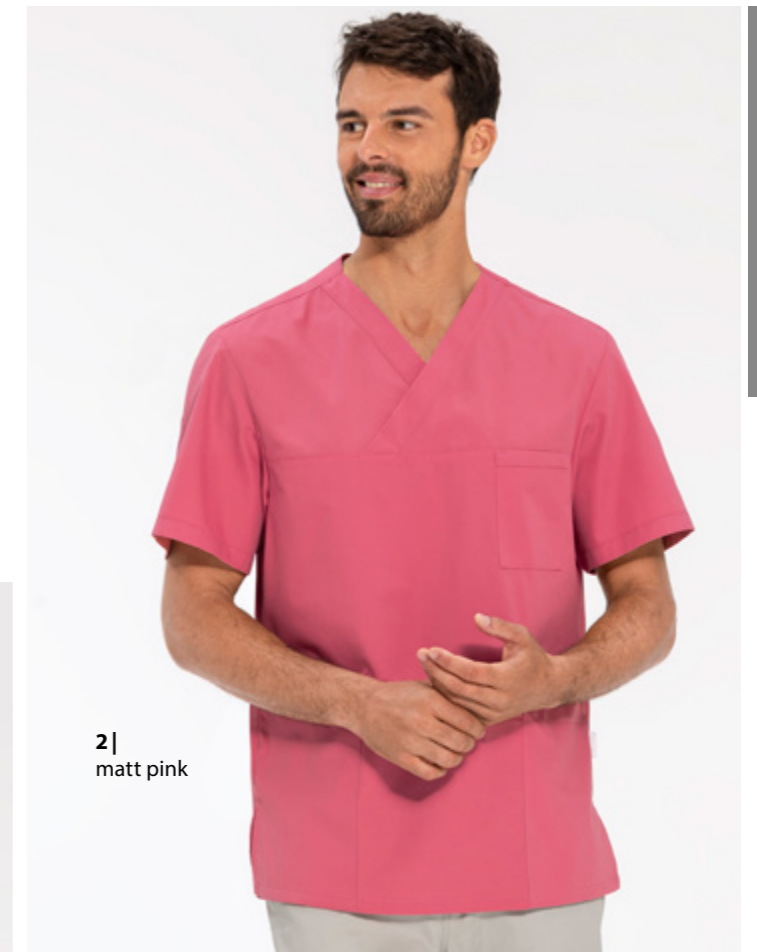
Envelope collar, short sleeve, 2 patched pockets, breast pocket with pen holder, side vents, keyloop integrated in left pocket, back length 75 cm/size M.

**Sizes:** XXS-5XL

**Fabric:** 50% cotton, 50% polyester, 175 g/m<sup>2</sup>

**Care:**

- white 5003.6550.090
- light grey 5003.6550.015
- mid blue 5003.6550.023
- lime green 5003.6550.042
- matt pink 5003.6550.056



2 | matt pink



with V-neck and tuck

2 | matt pink

**2 | Unisex scrub top Regular Fit 5007**

V-neck, short sleeve, 3 patched pockets, side vents, keyloop integrated in left pocket, back length 75 cm/size M.

**Sizes:** XXS-5XL

**Fabric:** 50% cotton, 50% polyester, 175 g/m<sup>2</sup>

**Care:**

- white 5007.6550.090
- light grey 5007.6550.015
- mid blue 5007.6550.023
- lime green 5007.6550.042
- matt pink 5007.6550.056





1 | white

**1 | Ladies coat Regular Fit 5023**

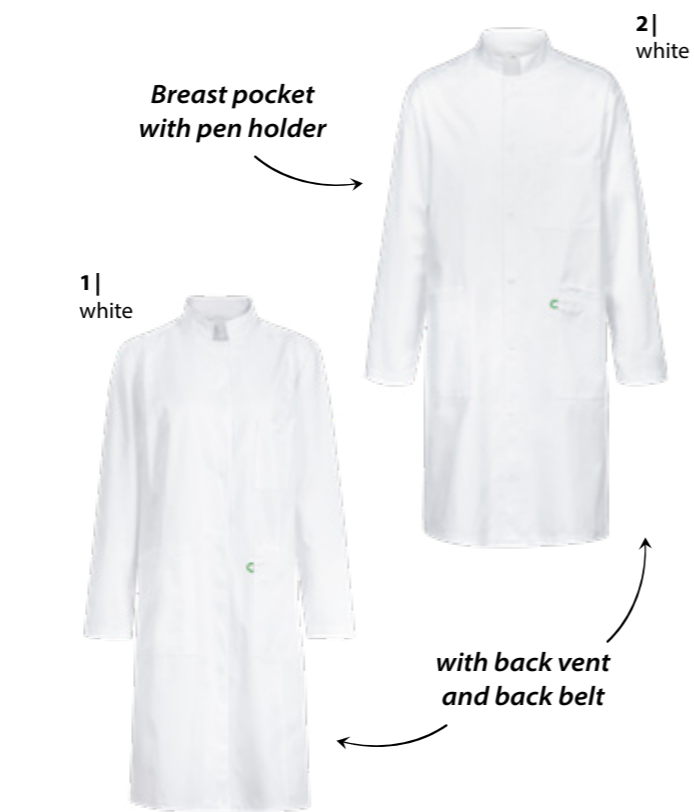
Stand-up collar, invisible press buttons, 3 patched pockets, integrated phone pocket, keyloop integrated in left pocket, back vent, back belt, dividing seams, back length 97 cm/size 38.

**Sizes:** 32-54

**Fabric:** 100 % cotton, 205 g/m<sup>2</sup>

**Care:**

● white 5023.8050.090



**2 | Unisex coat Regular Fit 5026**

Stand-up collar, invisible press buttons, 2 patched pockets, breast pocket with pen holder, integrated phone pocket, keyloop integrated in left pocket, back vent, back belt, back length 100 cm/size M.

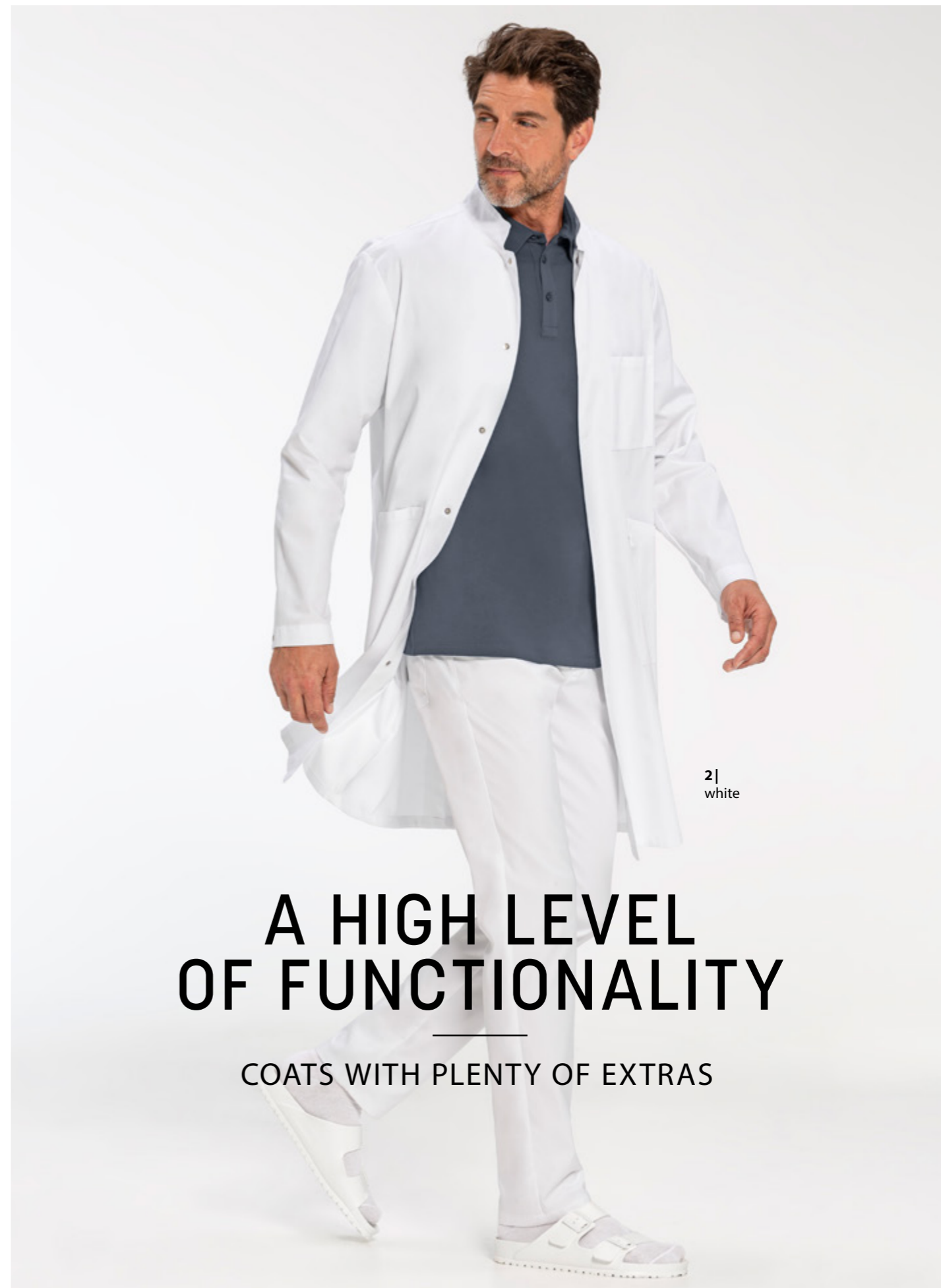
**Sizes:** XS-4XL

**Fabric:** 100 % cotton, 205 g/m<sup>2</sup>

**Care:** ● white 5026.8050.090

**Fabric:** 65 % polyester, 35 % cotton, 210 g/m<sup>2</sup>

**Care:** ● white 5026.8000.090



2 | white

**A HIGH LEVEL OF FUNCTIONALITY**

COATS WITH PLENTY OF EXTRAS



3 | white

2 | white

# MAKING YOUR TEAM SPIRIT VISIBLE

WITH OUTFITS FOR ALL DEPARTMENTS

No matter if it is in a nursing home, a doctor's office or a pharmacy: Wherever your team achieves the best medical performance, GREIFF is there to help. Because workwear doesn't only have to be functional – if the individual items of clothing fit well together, it also strengthens your team's sense of community.



1 | white



3 | mid blue

3 | lime green

3 | white

4 | lime green

1 | Unisex coat 5026 on page 18. 2 | Ladies coat 5023 on page 18. 3 | Unisex Scrub top 5003 on page 17. 4 | Unisex trousers 5333 on page 30.

# FOR ALL YOUR NEEDS

TROUSERS THAT SUIT YOU



1 | white



**1 | Ladies Jeans Regular Fit 5344**  
 Mid rise, 5-pocket cut, ankle width 36 cm/size 38, inside leg 82 cm/size 38.  
**Sizes:** 32-52, 72-88  
**Fabric:** 64% polyester, 33% cotton, 3% elastolefin, 265 g/m<sup>2</sup>  
**Care:**   
 ● white 5344.6570.090

1 | white



You can find our shirts starting on page 37.

2 | white



**2 | Ladies trousers 1372**  
 Mid rise, 5-pocket cut, elastic and functional, ankle width 28 cm/size 38, inside leg 80 cm.  
**Sizes:** 32-54, 72-88  
**Fabric:** 35% cotton, 35% polyester, 30% elastomultiester, 205 g/m<sup>2</sup>  
**Care:**   
 ● white 1372.2700.090



100% of the cotton was grown by fair trade producers, certified and handled by fair trade standards. More info: [info.fairtrade.net/sourcing](http://info.fairtrade.net/sourcing)



2 | white





1 | white



1 | white

Pull-on trousers with elastic waistband

**1 | Ladies trousers Regular Fit 5345**

Mid rise, super elastic and functional, 2 mock side pockets, 2 hip pockets, ankle width 31 cm/size 38, inside leg 72 cm/size 38.

**Sizes:** 32-54

**Fabric:** 63 % cotton, 35 % polyester, 2 % elastane, 228 g/m<sup>2</sup>

**Care:** ● white 5345.6580.090



1 | white



2 | white

with elastic waistband



2 | white

in two fabrics

**2 | Ladies trousers Regular Fit 5319**

5-pocket cut, elastic waistband at the back, ankle width 36 cm/size 38, inside leg 82 cm/size 38.

**Sizes:** 32-52

**Fabric:** 100 % cotton, 230 g/m<sup>2</sup>

**Care:** ● white 5319.1900.090

**Care:** ● light grey 5319.1900.015



**Fabric:** 65 % polyester, 35 % cotton, 210 g/m<sup>2</sup>

**Care:** ● white 5319.8000.090

**Care:** ● light grey 5319.8000.015



2 | white

# WHICH ONE WILL YOU CHOOSE?

## TROUSERS IN DIFFERENT VARIATIONS



1 | white

**1 | Men jeans Regular Fit 5343**  
 5-pocket cut, ankle width 36 cm/size 50, inside leg 84 cm/size 50.  
**Sizes:** 44-62, 90-110  
**Fabric:** 64% polyester, 33% cotton, 3% elastolefin, 265 g/m<sup>2</sup>  
**Care:**   
 ● white 5343.6570.090



1 | white

2 | white



**2 | Men trousers Regular Fit 1318**  
 5-pocket cut, elastic and functional, ankle width 36 cm/size 50, inside leg 84 cm/size 50.  
**Sizes:** 44-62, 94-110  
**Fabric:** 35% cotton, 35% polyester, 30% elastomultiester, 205 g/m<sup>2</sup>  
**Care:**   
 ● white 1318.2700.090



100% of the cotton was grown by fair trade producers, certified and handled by fair trade standards. More info: [info.fairtrade.net/sourcing](http://info.fairtrade.net/sourcing)



2 | white



2 | white



1 | light grey

with elastic waistband

1 | light grey



in two fabrics

**1 | Men trousers Regular Fit 5321**

5-pocket cut, elastic waistband at the back, ankle width 38 cm/size 50, inside leg 84 cm/size 50.

**Sizes:** 42-62

**Fabric:** 100% cotton, 230 g/m<sup>2</sup>

**Care:** ● white 5321.1900.090

**Care:** ● light grey 5321.1900.015



**Fabric:** 65% polyester, 35% cotton, 210 g/m<sup>2</sup>

**Care:** ● white 5321.8000.090

**Care:** ● light grey 5321.8000.015



1 | white



1 | lime green

1 | lime green



1 | white

in 3 colours

comfortable, soft fabric

with drawstring and elastic waistband

2 | white

**1 | Unisex trousers Regular Fit 5333**

Elastic waistband, 2 side pockets, 2 hip pockets, inside leg 84 cm/size M.

**Sizes:** XXS-5XL

**Fabric:** 50% cotton, 50% polyester, 175 g/m<sup>2</sup>

**Care:**

- white 5333.6550.090
- mid blue 5333.6550.023
- lime green 5333.6550.042



**2 | Unisex trousers Regular Fit 5338**

Elastic waistband with drawstring, 2 side pockets, 2 patched pockets, ankle width 40 cm/size M, inside leg 82 cm/size M.

**Sizes:** XXS-5XL

**Fabric:** 100% cotton, 230 g/m<sup>2</sup>

**Care:**

- white 5338.1900.090
- light grey 5338.1900.015



**Fabric:** 65% polyester, 35% cotton, 210 g/m<sup>2</sup>

**Care:**

- white 5338.8000.090
- light grey 5338.8000.015



# UNISEX TROUSERS

THAT FIT



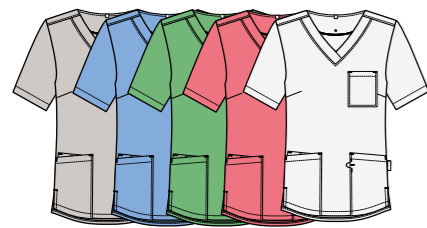
2 | white



# COLLECTION OVERVIEW

LADIES, MEN, UNISEX

## LADIES



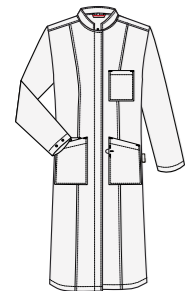
**Ladies scrub top 5105** (S. 11)  
white 5105.6550.090 light grey 5105.6550.015  
mid blue 5105.6550.023 lime green 5105.6550.042  
matt pink 5105.6550.056



**Ladies scrub tops 5106** (S. 11)  
white 5106.6550.090 light grey 5106.6550.015  
mid blue 5106.6550.023 lime green 5106.6550.042  
matt pink 5106.6550.056



**Ladies scrub top 5110** (S. 13)  
dark blue 5110.6560.022 dark green 5110.6560.040  
bordeaux 5110.6560.053 white 5110.6560.090



**Ladies coat 5023** (S. 18)  
white 5023.8050.090



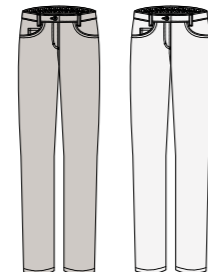
**Ladies jeans 5344** (S. 22)  
white 5344.6570.090



**Ladies trousers 1372** (S. 23)  
white 1372.2700.090



**Ladies trousers 5345** (S. 24)  
white 5345.6580.090



**Ladies trousers 5319.1900.** (S. 25)  
white 5319.1900.090 light grey 5319.1900.015  
**Ladies trousers 5319.8000.**  
white 5319.8000.090 light grey 5319.8000.015

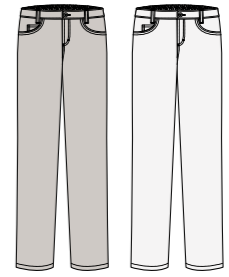
## MEN



**Men jeans 5343** (S. 26)  
white 5343.6570.090



**Men trousers 1318** (S. 27)  
white 1318.2700.090



**Men trousers 5321.1900.** (S. 28)  
white 5321.1900.090 light grey 5321.1900.015  
**Men trousers 5321.8000.**  
white 5321.8000.090 light grey 5321.8000.015

## UNISEX



**Unisex scrub tops 5006** (S. 13)  
dark blue 5006.6560.022 dark green 5006.6560.040  
bordeaux 5006.6560.053 white 5006.6560.090



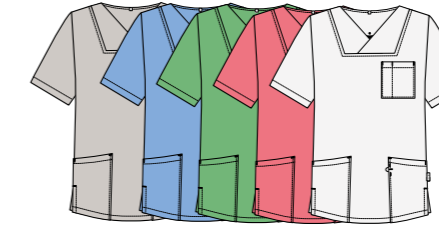
**Unisex scrub tops 5005** (S. 14)  
white 5005.6550.090 light grey 5005.6550.015  
mid blue 5005.6550.023 lime green 5005.6550.042  
matt pink 5005.6550.056



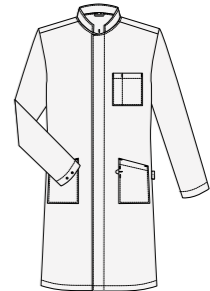
**Unisex scrub tops 5006** (S. 14)  
white 5006.6550.090 light grey 5006.6550.015  
mid blue 5006.6550.023 lime green 5006.6550.042  
matt pink 5006.6550.056



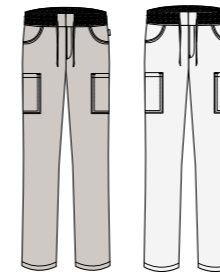
**Unisex scrub tops 5007** (S. 17)  
white 5007.6550.090 light grey 5007.6550.015  
mid blue 5007.6550.023 lime green 5007.6550.042  
matt pink 5007.6550.056



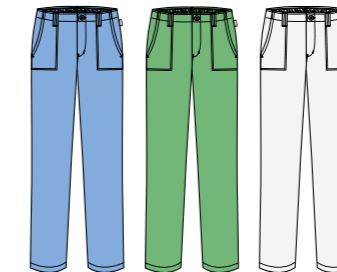
**Unisex scrub tops 5003** (S. 17)  
white 5003.6550.090 light grey 5003.6550.015  
mid blue 5003.6550.023 lime green 5003.6550.042  
matt pink 5003.6550.056



**Unisex coat 5026.8050.** (S. 18)  
white 5026.8050.090  
**Unisex coat 5026.8000.**  
white 5026.8000.090



**Unisex-Hose 5338.1900.** (S. 30)  
white 5338.1900.090 light grey 5338.1900.015  
**Unisex-Hose 5338.8000.**  
white 5338.8000.090 light grey 5338.8000.015



**Unisex-Hose 5333** (S. 30)  
white 5333.6550.090 mid blue 5333.6550.023  
lime green 5333.6550.042



1 | navy blue

**For the perfect first impression - GREIFF CARE.**



3 | bordeaux

2 | bordeaux

1 | Ladies polo shirt 66810 on page 37. 2 | Ladies scrub top 5110 on page 13. 3 | Unisex scrub top 5006 on page 13.



2 | dark blue

# WELLBEING IS YOUR MISSION

IT'S OURS TOO!

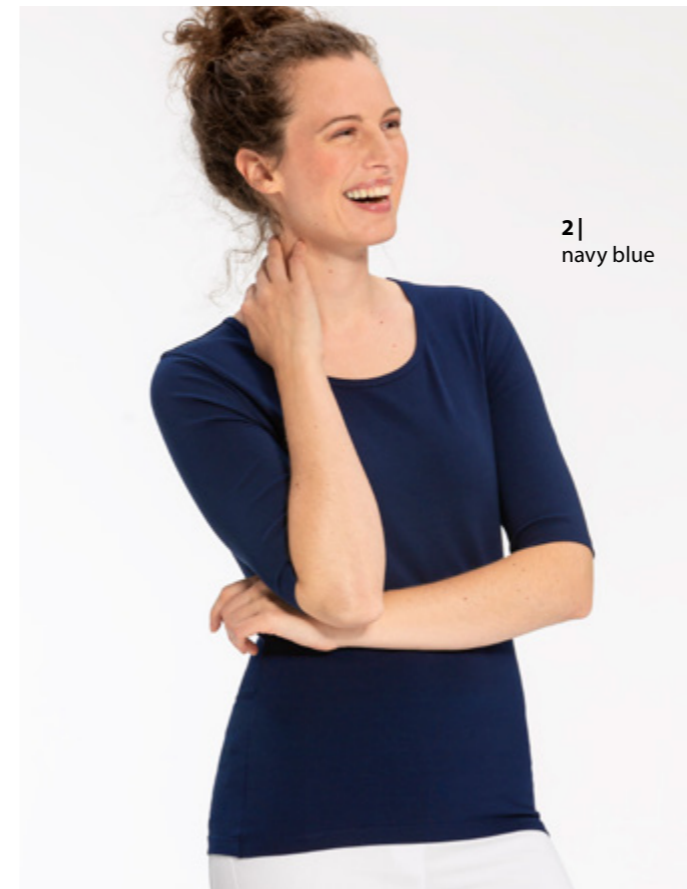
We develop our products with the same diligence with which you do your job – with maximum professionalism and great passion.



1|  
bleu

# PRACTICAL SHIRTS FOR EVERY USE

IN SOFT COLOURS AND WITH ORGANIC COTTON



2|  
navy blue



3|  
burgundy

### 3 | Ladies polo shirt Regular Fit 66810

Kent collar, 3 button placket, collar made of body fabric.

**Größen:** XS-3XL

**Fabric:** 93% cotton, 7% elastane, 205 g/m<sup>2</sup>

**Pflege:**

- white 66810.1405.090
- anthracite 66810.1405.011
- bleu 66810.1405.029
- black 66810.1405.010
- navy blue 66810.1405.020
- burgundy 66810.1405.054



1|  
burgundy



2|  
burgundy



### 1 | Ladies top Regular Fit 6864

Short sleeve, v-neck.

**Sizes:** XS-3XL

**Fabric:** 93% cotton, 7% elastane, 205 g/m<sup>2</sup>

**Care:**

- white 6864.1405.090
- anthracite 6864.1405.011
- bleu 6864.1405.029
- black 6864.1405.010
- navy blue 6864.1405.020
- burgundy 6864.1405.054



### 2 | Ladies top Regular Fit 6680

Short sleeve, round neckline.

**Sizes:** XS-3XL

**Fabric:** 93% cotton, 7% elastane, 205 g/m<sup>2</sup>

**Care:**

- white 6680.1405.090
- anthracite 6680.1405.011
- bleu 6680.1405.029
- black 6680.1405.010
- navy blue 6680.1405.020
- burgundy 6680.1405.054



3|  
navy blue





1 | bleu with V-neck



**1 | Men top Regular Fit 6824**  
 Short sleeve, v-neck.  
**Sizes:** S-3XL  
**Fabric:** 93% cotton, 7% elastane, 205 g/m<sup>2</sup>  
**Care:**   
 ● white 6824.1405.090 ● black 6824.1405.010  
 ● anthracite 6824.1405.011 ● navy blue 6824.1405.020  
 ● bleu 6824.1405.029 ● burgundy 6824.1405.054



2 | burgundy



1 | anthracite

2 | bleu with 3 buttons



**2 | Men polo shirt Regular Fit 66270**  
 Kent collar, 3 button placket, collar made of body fabric.  
**Sizes:** S-3XL  
**Fabric:** 93% cotton, 7% elastane, 205 g/m<sup>2</sup>  
**Care:**   
 ● white 66270.1405.090 ● black 66270.1405.010  
 ● anthracite 66270.1405.011 ● navy blue 66270.1405.020  
 ● bleu 66270.1405.029 ● burgundy 66270.1405.054





# 3 STEPS TO A UNIQUE PIECE

## THE GREIFF LOGO SERVICE

Your company is unique and you can show that: With your company name or your logo as high-quality embroidery or emblem on your employees' clothing. Customisation puts the finishing touch on your corporate identity and creates a professional appearance. And it's that simple:



Find the item you want for you  
or your team.



Choose between embroidery or emblem  
with your name or logo.

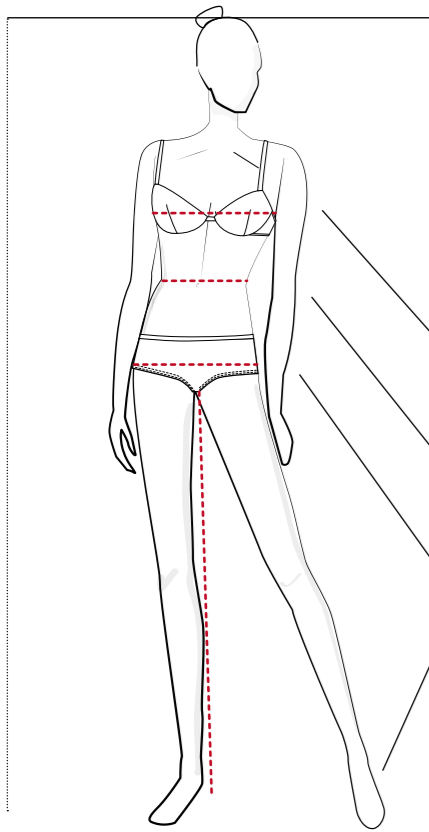


Send your template as a PDF or JPG and  
specify the Pantone number.

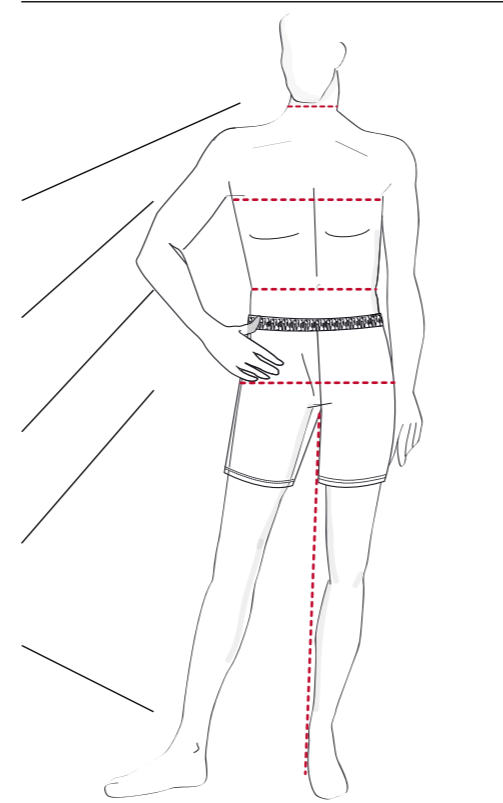
Pricing is as simple as it is transparent: Costs are calculated based on the number of pieces to be upgraded, the number of stitches in the motif and a one-time programme allowance, which we will reveal separately. GREIFF is glad to help you!

Contact: [info@greiff.de](mailto:info@greiff.de)

# HOW TO FIND THE RIGHT SIZE



- A Height**  
Measure from the top of your head to the sole of your bare foot.
- Collar size**  
Measure around the widest point of your neck (not too tight).
- B Chest circumference**  
Measure horizontally around the widest point of the chest (not too tight).
- C Waist circumference**  
Measure around the narrowest point of the waist (not too tight).
- D Hip circumference**  
Measure horizontally around the widest point of the hips/buttocks (not too tight).
- E Inseam length**  
Measure along the inside of your leg from the crutch to the sole of your foot (not too tight).



## LADIES

REGULAR												
US Size	XS		S		M		L		XL		XXL	
Germany	32	34	36	38	40	42	44	46	48	50	52	
Great Britain	6R	8R	10R	12R	14R	16R	18R	20R	22R	24R	26R	
France	34	36	38	40	42	44	46	48	50	52	54	
A Body height	165-172	165-172	165-172	165-172	165-172	165-172	165-172	165-172	165-172	165-172	165-172	
B Chest	74-77	78-81	82-85	86-89	90-93	94-97	98-102	103-107	108-113	114-119	120-125	
C Waist	59-62	63-65	66-69	70-73	74-77	78-81	82-85	86-90	91-95	96-102	103-108	
D Hip	82-85	86-89	90-93	94-97	98-101	102-105	106-109	110-113	114-117	118-122	123-127	
E Inside leg	79	79	79	79	79	79	79	79	79	79	79	

SLIM												
Germany		68	72	76	80	84	88	92	96	100	104	
Great Britain		8L	10L	12L	14L	16L	18L	20L				
France		36L	38L	40L	42L	44L	46L	48L				
A Body height		173-180	173-180	173-180	173-180	173-180	173-180	173-180	173-180	173-180	173-180	
B Chest		78-81	82-85	86-89	90-93	94-97	98-102	103-107	108-113	114-119	120-125	
C Waist		63-65	66-69	70-73	74-77	78-81	82-85	86-90	91-95	96-102	103-108	
D Hip		86-89	90-93	94-97	98-101	102-105	106-109	110-113	114-117	118-122	123-127	
E Inside leg		83	83	83	83	83	83	83	83	83	83	

STOCKY												
Germany	16	17	18	19	20	21	22	23	24	25	26	
Great Britain	6S	8S	10S	12S	14S	16S	18S	20S	22S	24S		
France	34C	36C	38C	40C	42C	44C	46C	48C	50C	52C		
A Body height		157-164	157-164	157-164	157-164	157-164	157-164	157-164	157-164	157-164	157-164	
B Chest		78-81	82-85	86-89	90-93	94-97	98-102	103-107	108-113	114-119	120-125	
C Waist		63-65	66-69	70-73	74-77	78-81	82-85	86-90	91-95	96-102	103-108	
D Hip		86-89	90-93	94-97	98-101	102-105	106-109	110-113	114-117	118-122	123-127	
E Inside leg		75	75	75	75	75	75	75	75	75	75	

UNISEX																			
Unisex GREIFF	XXS	XS		S		M		L		XL		XXL		3XL		4XL		5XL	
Ladies	32	34	36	38	40	42	44	46	48	50	52	54	56	58	60	62	64	66	68
Men	38	40	42	44	46	48	50	52	54	56	58	60	62	64	66	68	70	72	74

# FABRIC INFORMATION



## Moisture-regulating

This textile contains a specially developed fibre that transports moisture from the inside of the fabric to the outside. Thanks to its high breathability, the fibre also improves the heat-regulating effect of your clothing. The fibre is wrinkle-resistant, is low-shrink and easy to care for. The elasticity also ensures a good fit and optimal comfort.



## Stretch

The synthetic elastane fibres processed here have unique elasticity and shape retention. They can be stretched to up to seven times their original length.



## Organic cotton

Organic cotton does not use any artificial plant protection products or fertilisers. It is grown according to the strict guidelines of organic farming.

## MEN

REGULAR												
US Size	XS	S		M		L		XL		XX L		
Collar	35/36		37/38		39/40		41/42		43/44		45/46	
Germany	42	44	46	48	50	52	54	56	58	60	62	
Great Britain	Jackets	34R	36R	38R	40R	42R	44R	46R	48R	50R	52R	
	Trousers	28R	30R	32R	34R	36R	38R	40R	42R	44R	46R	
France	Trousers	38	40	42	44	46	48	50	52	54	56	
A Body height	162-166	166-170	168-173	171-176	174-179	177-182	180-184	182-186	184-188	186-192	190-194	
B Chest	82-85	86-89	90-93	94-97	98-101	102-105	106-109	110-113	114-117	118-121	122-125	
C Waist	70-73	74-77	78-81	82-85	86-89	90-93	94-99	100-103	104-107	109-113	114-117	
D Hip	85-88	89-92	93-96	97-100	101-104	105-108	109-112	113-117	118-121	122-125	126-129	
E Inside leg	78	79	80	81	82	84	86	87	87	87	88	

SLIM												
Germany		88	90	94	98	102	106	110	114	118	122	
Great Britain	Jackets		36L	38L	40L	42L	44L	46L	48L	50L		
	Trousers		30L	32L	34L	36L	38L	40L	42L	44L		
France	Trousers		40L	42L	44L	46L	48L	50L	52L	54L	56L	
A Body height		172-176	177-181	180-184	182-186	184-188	187-191	189-193	191-194	193-196	195-198	
B Chest		84-87	88-91	92-95	96-99	100-103	104-107	108-111	112-115	116-119	120-123	
C Waist		72-75	76-79	80-83	84-87	88-91	92-95	96-100	101-105	106-110	111-115	
D Hip		89-92	93-96	97-100	101-104	105-108	109-112	113-117	118-121	122-125	126-129	
E Inside leg		84	85	86	87	89	91	92	92	92	93	

STOCKY												
Germany		22	23	24	25	26	27	28	29	30	31	
Great Britain				24	25	26	27	28	29	30	31	
France				24	25	26	27	28	29	30	31	
A Body height		159-164	162-167	165-170	168-173	171-176	173-178	175-180	177-182	179-184	181-186	
B Chest		90-93	94-97	98-101	102-105	106-109	110-113	114-117	118-121	122-125	126-129	
C Waist		78-81	82-85	86-87	90-93	94-97	98-102	103-107	108-112	113-117	118-122	
D Hip		86-89	90-93	94-97	98-101	102-105	106-109	110-113	114-117	118-122	123-127	
E Inside leg		75	76	77	78	80	82	83	83	83	84	



**GREIFF MODE GMBH & CO. KG**

Memmsdorfer Straße 250  
96052 Bamberg · Germany  
**greiff.de**



**GREIFF**

GREIFF SUITS